



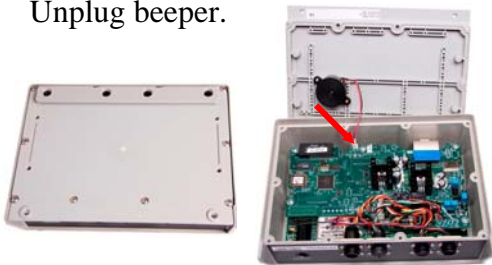
405348 OPTION-EZ3 DK INTERNAL 900MHZ

Contains 404381 circuit board with 403797 harness, keyceptacle and 900MHZ wire antenna radio; hardware.

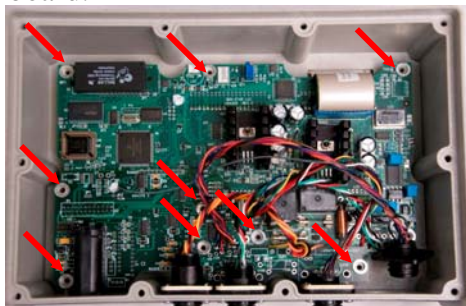


Instructions:

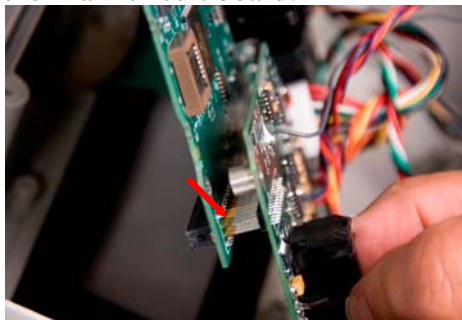
1. Remove back cover of the indicator. Unplug beeper.



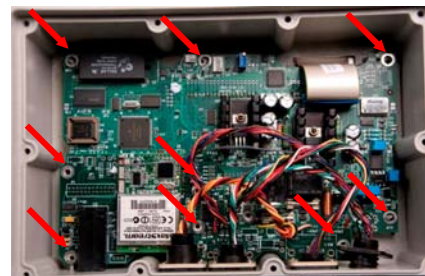
2. Remove screws from Main circuit board.



3. Place new Option circuit board in housing while connecting P1 to J1 on the Main circuit board.



4. Move circuit boards back into position in the housing, lining up the Datakey keyceptacle with the housing. Attach circuit boards to the housing with screws.



5. Position the radio antenna up from the radio, next to J901.



6. Reconnect beeper. Match locking tab.



7. Re-attach rear cover.
8. Change indicator settings to enable the serial port, enable the radio and set up the radio channel.