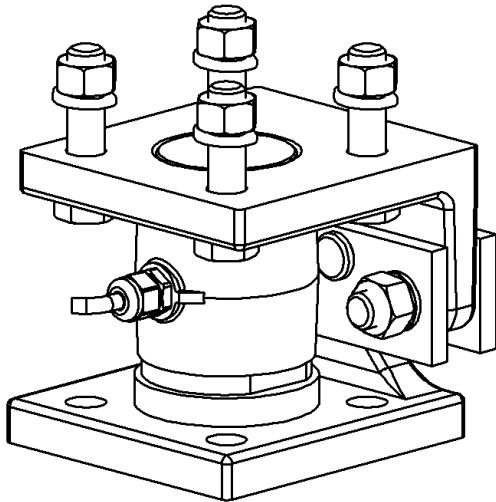




CT Mount Installation

Instructions And Repair Parts



Ft. Atkinson, Wisconsin USA



Panningen, The Netherlands

www.digi-star.com

TABLE OF CONTENTS

INTRODUCTION	1
TECHNICAL SPECIFICATIONS.....	2
Mounting Dimensions	2
SAFETY DURING USE	3
Cleaning.....	3
Charging Battery and Welding.....	3
INSTALL MOUNTS.....	4
ASSEMBLE MOUNTS	5
INSTALL LOAD CELLS	6
INSTALL PINS.....	7
PERIODIC MAINTENANCE	8
REPAIR PARTS	9

All rights reserved. Reproduction of any part of this manual in any form whatsoever without Digi-Star's express written permission is forbidden. The contents of this manual are subject to change without notice. All efforts have been made to assure the accuracy of the contents of this manual. However, should any errors be detected, Digi-Star would greatly appreciate being informed of them. The above notwithstanding, Digi-Star can assume no responsibility for errors in this manual or their consequence.

© Copyright! 2008 Digi-Star, Fort Atkinson (U.S.A.).

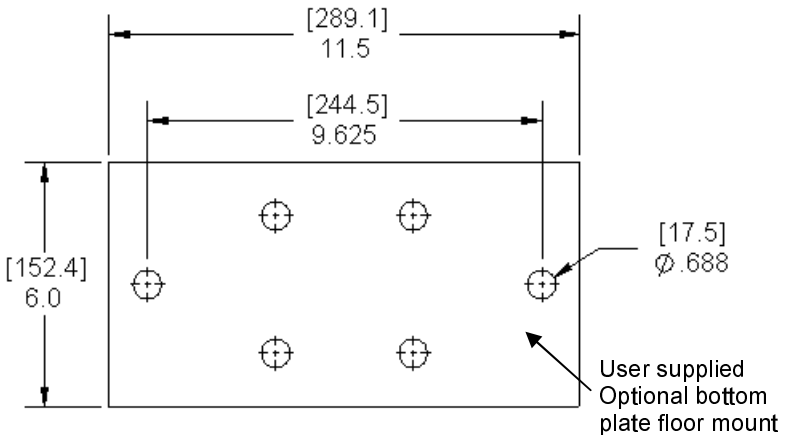
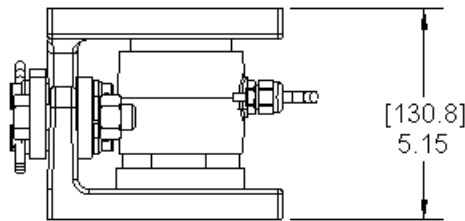
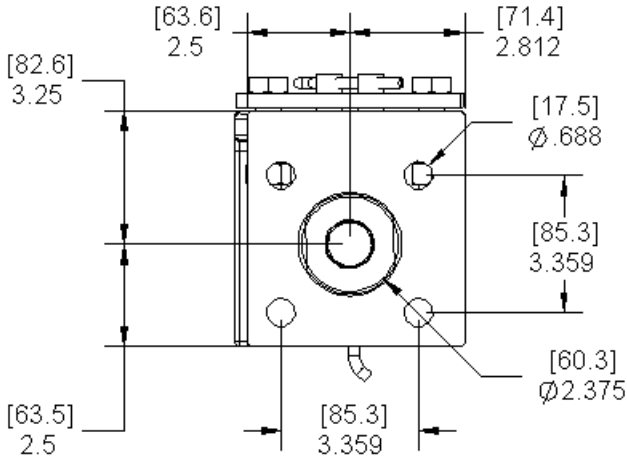
INTRODUCTION

The Digi-Star universal CT mounts are specifically designed to be used with the Digi-Star CT 10k, 30k and 50k compression load cells. The “floating design” mounts are used in mobile and stationary bin weighing applications. Checking action of the floating mount prevents starting, stopping and swaying of the load from interfering with the accuracy of the scales.

TECHNICAL SPECIFICATIONS

Mounts: Ductile cast iron with hot dip galvanized coating
 Capacity: 50,000 lbs (22,685 kg)

Mounting Dimensions



SAFETY DURING USE



Caution

Cleaning

Do not use running water (high pressure cleaners, hoses) to clean the indicator.

Charging Battery and Welding

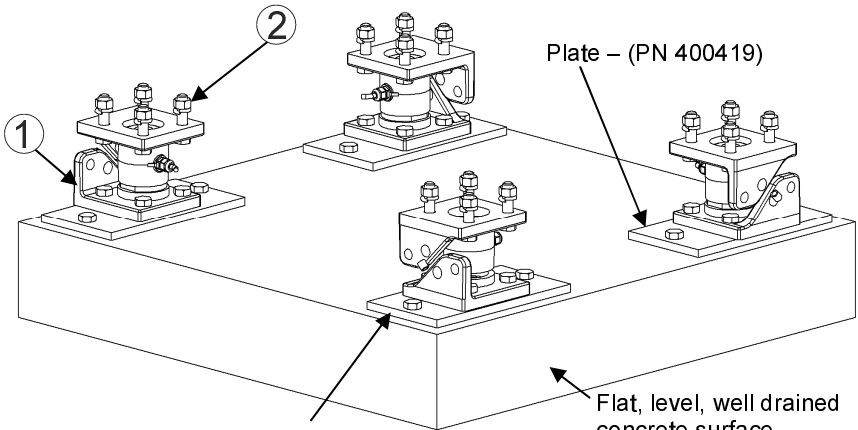
Disconnect all cables from the weighing indicator before charging the battery or welding on the machine. If cables are left connected, the weighing indicator and connected load cells could be damaged.

Important: Do not weld near indicator, load cells or cables, remove from area to be welded. Place ground close to area to be welded to prevent current from passing through electronic parts.

INSTALL MOUNTS

1. Position mounts (1) so they are rotated 90° as shown in figure below.
2. Attach top mount to bin structure using 5/8" Ø or M16 bolts (2). 5/8" Ø or M16 bolts are not included with kit, user supplied.
3. Attach bottom mount to supporting structure using 5/8" Ø or M16 bolts.

Note: When using concrete under CT Mounts, use plate (PN 400419) to protect concrete from damage due to extreme pressure.



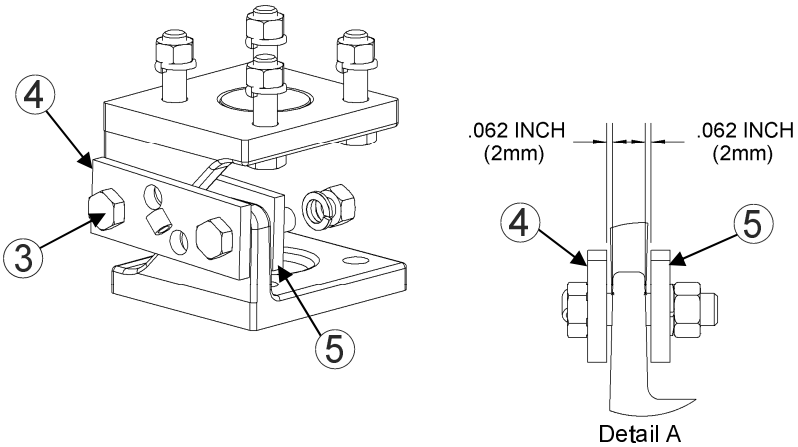
Remove any dirt, rocks or foreign debris from under supports, supports must be flush w/ Conc. Pad.

Flat, level, well drained concrete surface.
(Usually flatness within $\pm 1/8$ " is required)

ASSEMBLE MOUNTS

4. Install plates using M16 bolts, nuts and lockwashers supplied.
 - a. Pass bolts (3) thru welded plate (4) and mounts as shown in figure below.
 - b. Thread bolt into inside plate (5) leaving about 1/16" (2mm) space between plates and mount.
 - c. Attach nuts and lockwashers and tighten securely.

Important: Plates must be loose and able to move freely even after nut is tightened.



INSTALL LOAD CELLS

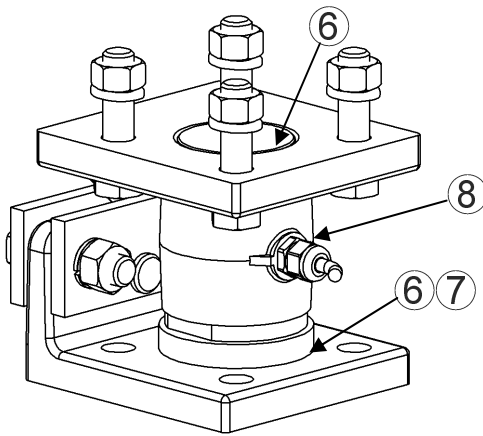
5. Raise top mount to allow space for load cells and shims.
6. Install shim (6) into mount under each load cell.

Note: Use steel shims for stationary scale and rubber shims for mobile scale

7. Slide seal ring (7) onto bottom of load cell.
8. Install load cell (8) and top shim (6).

Important: Check cables before lowering top mount to assure cables are not pinched or stretched. Assure that top shim stays in place as top mount is lowered.

9. Lower top mount onto load cells.

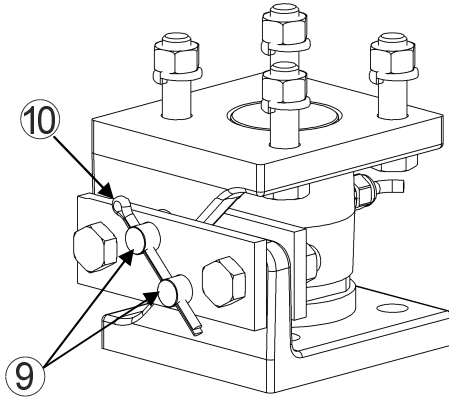


INSTALL PINS

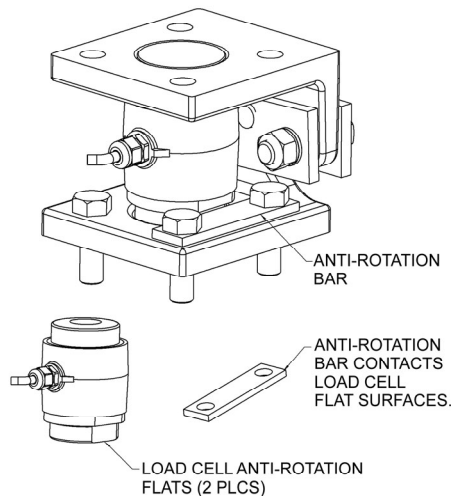
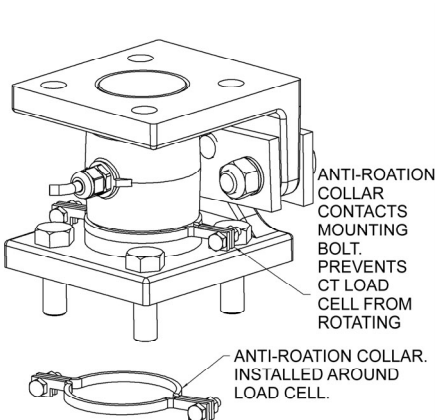
10. Install the two pins (9) into the plates as shown.

Important: Plates must be loose around mounting plates. If not, disassemble and return to step #4.

11. Install cotter pin (10) thru plate and pins. Bend end of pin to secure.



For mobile applications, an anti-rotation device may be required to prevent load cell cable damage. Below are two possible methods:



PERIODIC MAINTENANCE

Every 6 months:

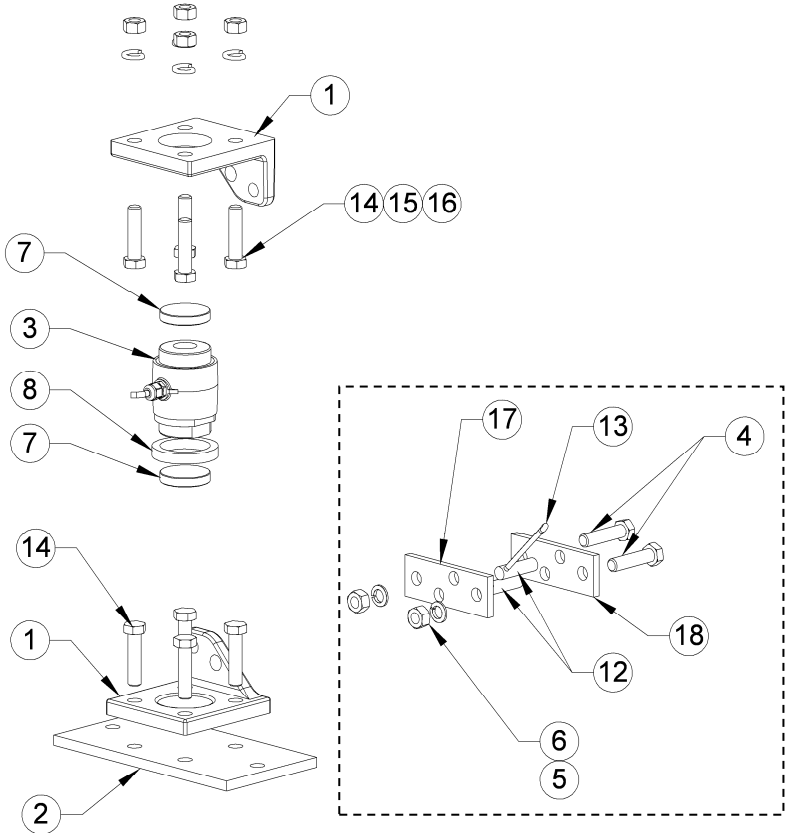
Check mounts for loose nuts and bolts.

Make sure that plates are free to move.

Check mounts to make sure shims have not deteriorated causing improper contact between load cell body and casting

REPAIR PARTS

P/N 35017 Pack – CT Steel Shim
P/N 404109 Pack – CT Urethane Shim



Key	Qty.	Part No.	Description	Notes
1	2	153021	Mount-Ct Half Zp	
2	1	400419	Plate, CT Mount	Opt. (For Mounts On Concrete)
3	-	-	CT Load Cell	Order Separately
4	4	404971	Scr-M16x2x65 HHCS ZP	
5	4	404969	Wash-M16 Lock ZP	
6	4	404970	Nut - M16x2 ZP	
7	2	404033	Shim, CT Mount Steel ZP	Incl. For Stationary Scale
	2	400118	Rubber Shim	Incl. For Mobile Scale
8	1	830409	Ring-Sealing 1/2" Sponge	
12	1	153024	Pin-CT Mount	
13	1	404968	Pin-Cotter 1/4 X 3.0 ZP	
14	-	-	Scr-M16x2x65 HHCS ZP	User Supplied, Not Incl. w/ Pack
15	-	-	Washer-Split Lock W Cylinder	User Supplied, Not Incl. w/ Pack
16	-	-	Nut - M16x2 ZP	User Supplied, Not Incl. w/ Pack
17	1	153023	Plate – CT Mount w/ Threads	
18	1	153022	Plate – CT Mount Welded	